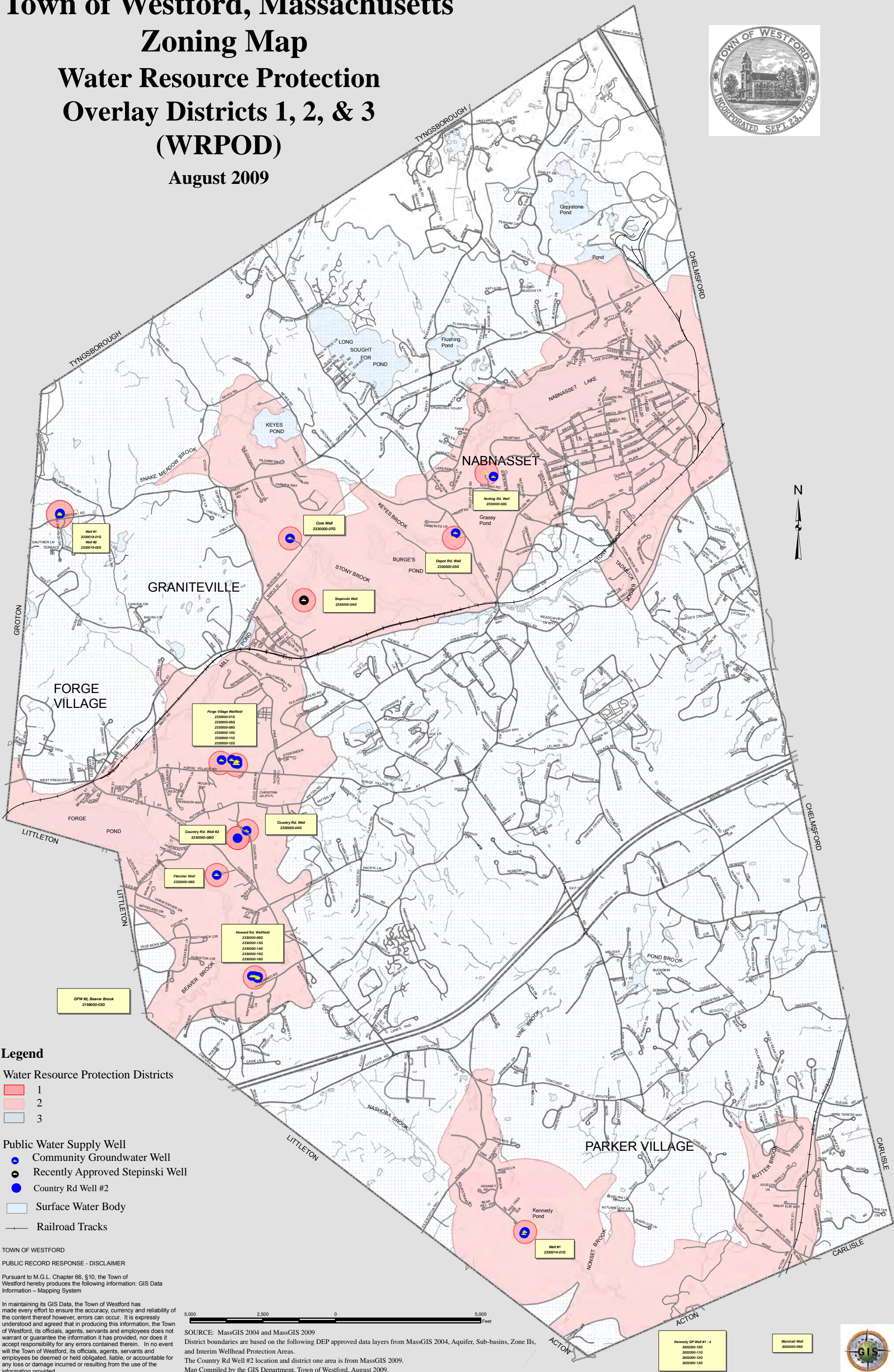


Town of Westford, Massachusetts

Zoning Map

Water Resource Protection Overlay Districts 1, 2, & 3 (WRPOD)

August 2009



Legend

Water Resource Protection Districts

- 1
- 2
- 3

Public Water Supply Well

- Community Groundwater Well
- Recently Approved Stepinski Well
- Country Rd Well #2
- Surface Water Body
- Railroad Tracks

TOWN OF WESTFORD
PUBLIC RECORD RESPONSE - DISCLAIMER

Pursuant to M.G.L. Chapter 66, §10, the Town of Westford hereby produces the following information: GIS Data Information - Mapping System

In maintaining its GIS Data, the Town of Westford has made every effort to ensure the accuracy, currency and reliability of the content thereof however, errors can occur. It is expressly understood and agreed that in producing this information, the Town of Westford, its officials, agents, servants and employees does not warrant or guarantee the information it has provided, nor does it accept responsibility for any errors contained therein. In no event will the Town of Westford, its officials, agents, servants and employees be deemed or held obligated, liable, or accountable for any loss or damage incurred or resulting from the use of the information provided.

5,000 2,500 0 5,000 Feet

SOURCE: MassGIS 2004 and MassGIS 2009
District boundaries are based on the following DEP approved data layers from MassGIS 2004, Aquifer, Sub-basins, Zone IIs, and Interim Wellhead Protection Areas.
The Country Rd Well #2 location and district one area is from MassGIS 2009.
Map Compiled by the GIS Department, Town of Westford, August 2009.

Kennedy GP Well #1 - 4
2002000-100
2002000-110
2002000-120
2002000-130

Marshall Well
2002000-090

